



# INTEGRAL® A+

INTEGRAL® A+ by Alltech is a nutritional technology with proven efficacy to support herd health and performance. The hydrolyzed yeast-based solution helps animals achieve their true potential. Its effectiveness has been verified by the world's top institutions in animal science, including the University of Guelph, Canada, and the French National Institute for Agricultural Research (INRA).

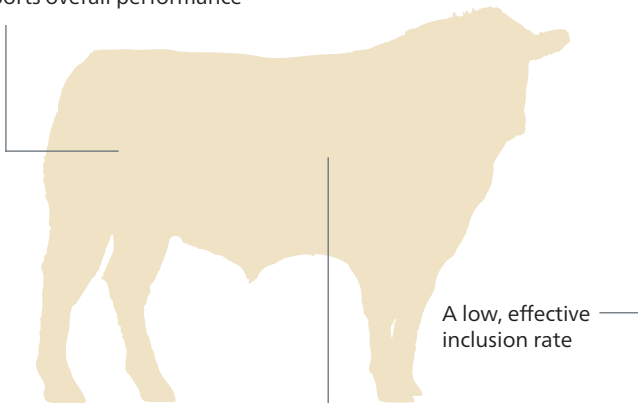


## Safeguarding the health of your animals

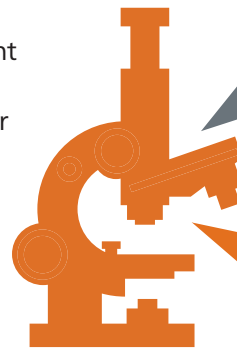
Safeguarding the health of your animals means ensuring they get off to the right start. As productivity in modern beef production increases, so do the challenges and risks that can affect herd health and performance. It is important to monitor risk from the farm to the feed mill and on to the animal consuming the diet.

## Focusing on Performance

Supports overall performance



Stable over a wide pH range



More than 90 peer-reviewed *in vivo* trials

Supported by 20 Ph.D. and 22 master's theses

## Suggested Feeding Rates

### Reproduction Herd

- Initial Up to 30 g/head/day
- Maintenance 10 g/head/day
- Step-down program Week 1 & 2 – 30 g/head/day  
After 1-2 weeks – 10 g/head/day

*Your herd is your business.  
Protecting it is ours.*



Available from:

Hubbard Feeds  
Mankato, MN  
1.800.869.7219  
www.hubbardfeeds.com

